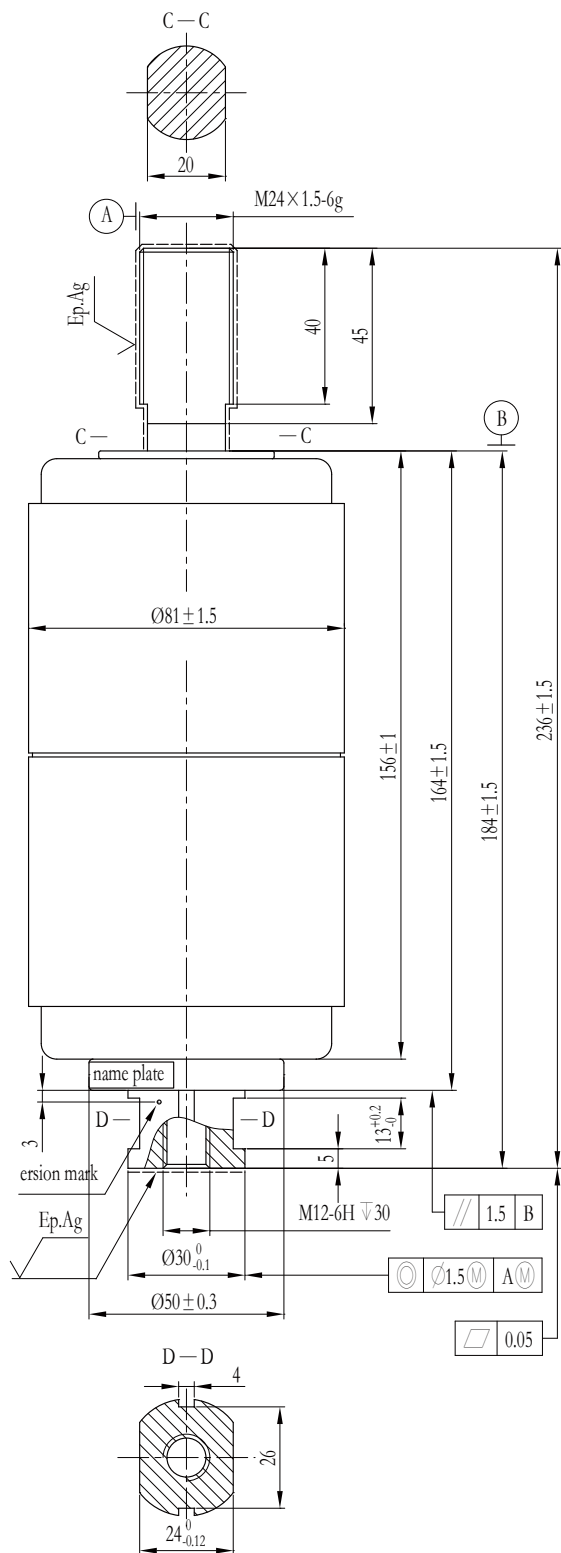


## GTD-24/1250-20C



### Main Technical Data

Item	Unit	Value
Rated Voltage	kV	24
Lightning Impulse Withstand Voltage (Peak)	kV	125☆
Short-time (1min) Power-frequency Withstand Voltage	kV	50/65☆
Rated Frequency	Hz	60
Rated Current	A	1250
Rated Short-time Withstand Current	kA	20
Rated Duration of Short-circuit	s	4
Rated Peak Withstand Current	kA	50
Rated Short-circuit Making Current	kA	50
Rated Short-circuit Breaking Current	kA	20
Max. Dc Component		50%
Switch Operations of Rated Short-circuit Breaking Current	Operations	30
Rated Single Capacitor Bank Breaking Current	A	400※
Rated Back-to-Back Capacitor Bank Breaking Current	A	400※
Mechanical Endurance	Operations	10000
Clearance Between Open Contacts	mm	13 ± 1
Contact Closed Force Due to Bellows and Atmosphere	N	110 ± 40
Counterforce of Contact at Full Stroke	N	190 ± 40
Circuit Resistance at Min. Rated Contact Force	μΩ	≤ 18
Contact Limit Erosion	mm	3
Mass of Moving Parts	kg	0.9
Internal Gas Pressure	Pa	< 1.33 × 10 <sup>-3</sup>
Shelf Life	Years	20
Rated Operating Sequence		Open-0.3s-CO-180s-CO

### Mechanical Data of Switch Equipped With Interrupter

Item	Unit	Value
Average Opening Speed (first 6mm)	m/s	1.4 ± 0.2
Average Closing Speed (last 6mm)	m/s	0.8 ± 0.2
Contact Bounce Duration at Closing Operation	ms	≤ 2
Out of Simultaneity of Contact Closing and Opening	ms	≤ 1
Rated Contact Pressure	N	1800 <sup>+400</sup> <sub>0</sub>
Contact Pressure at Contact Touch Point	N	1260 <sup>+300</sup> <sub>0</sub>
Max. Rebound of Contact at Opening Operation	mm	2
Overtravel During Opening	mm	≤ 2

Note 1: "☆" Within transformer oil or equivalent isolation medium;

Note 2: "※" Rated characteristics to be given on request;

Note 3: Meets or exceeds the electrical endurance requirements of class E2 for autoreclosing duty per IEC 62271-100;

Note 4: The movable stem of the vacuum interrupter could not suffer on more than 40N · m twisting force and in order not to damage the metal bellows, the movable stem should be prevented from rotation when assembling. For more requirements please check the Instructions of Usage.